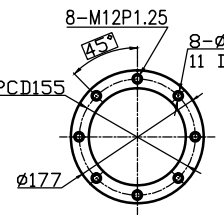
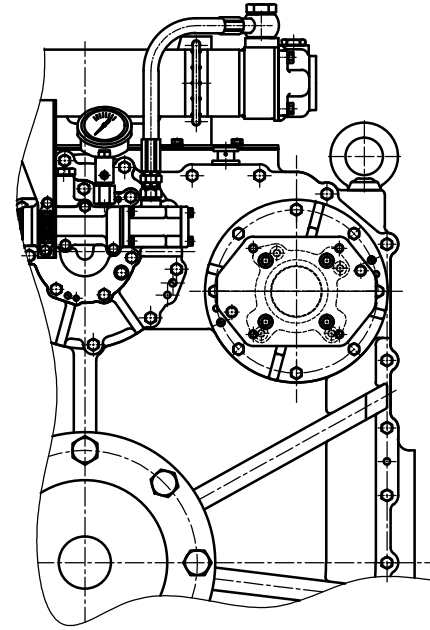
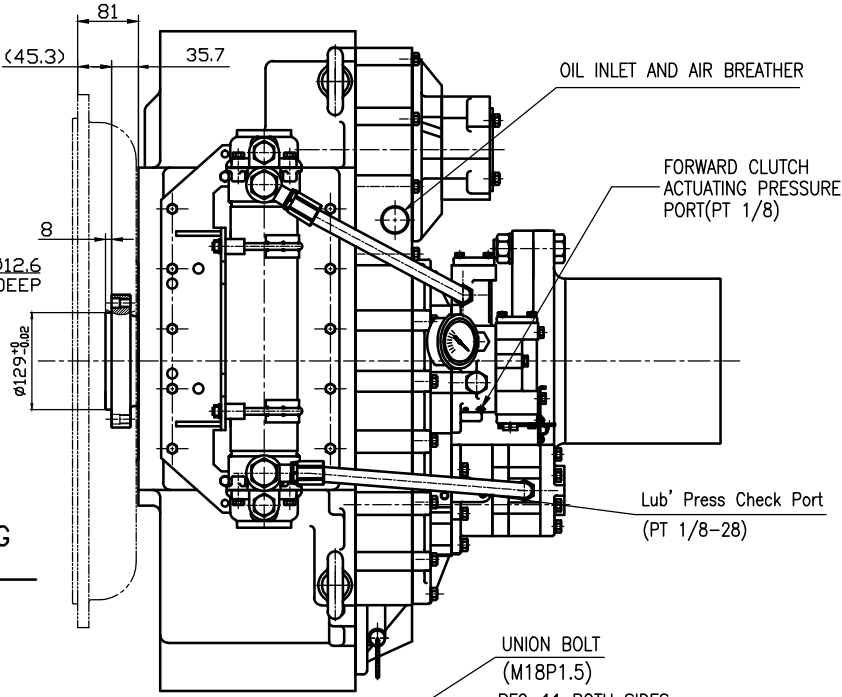


OUTPUT SHAFT COUPLING & PROPELLER COUPLING DIMENSION

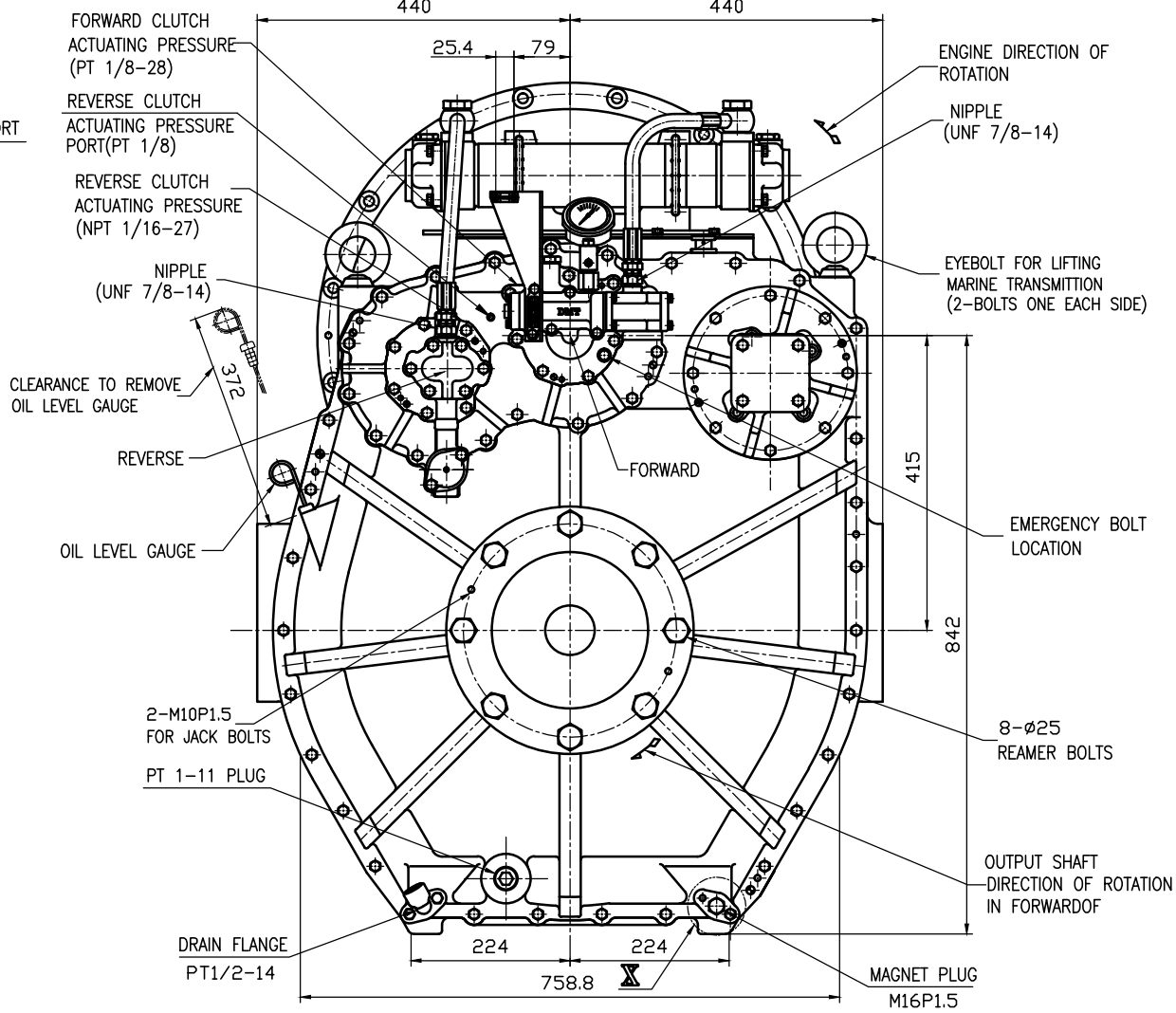
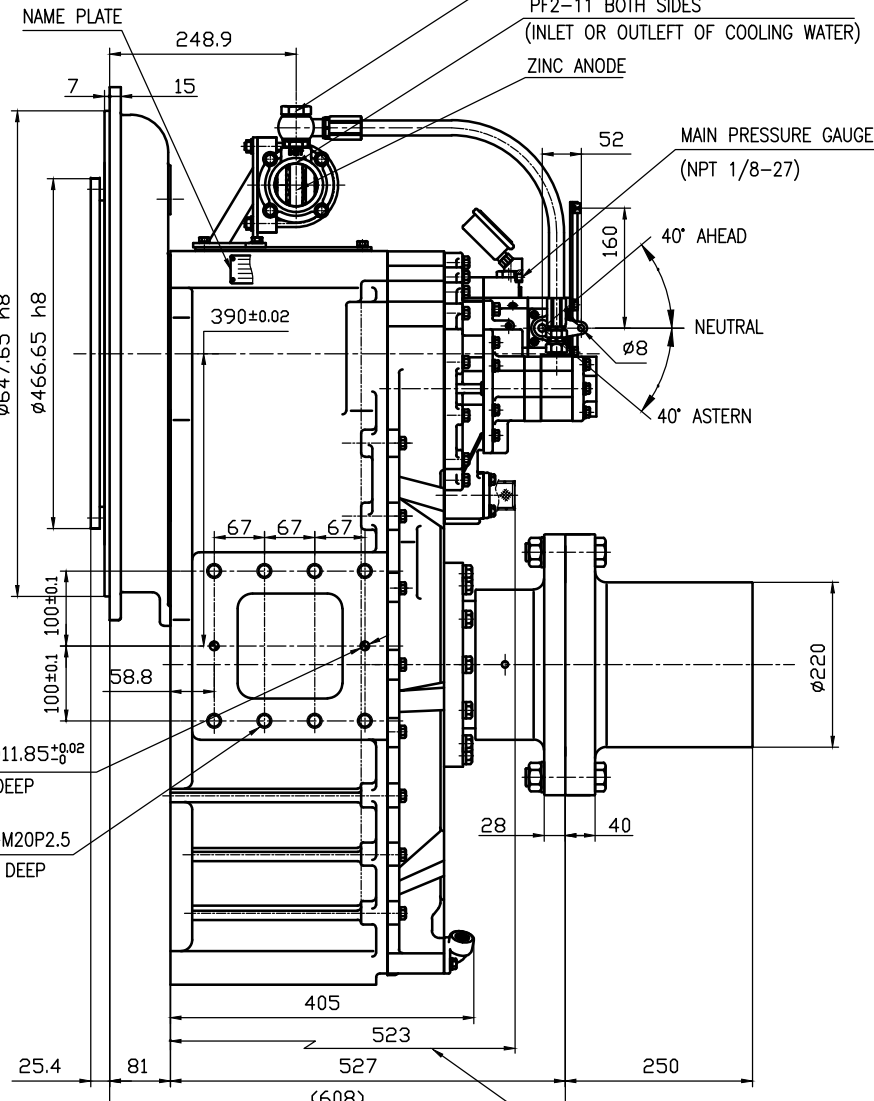
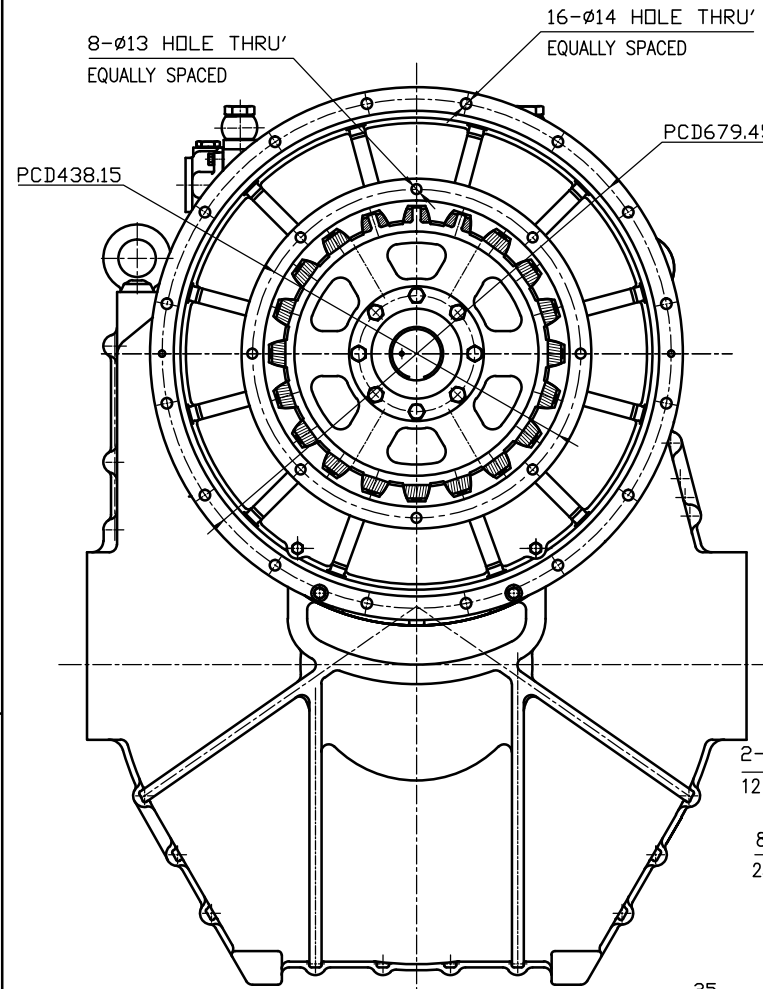


INPUT COUPLING DIMENSION

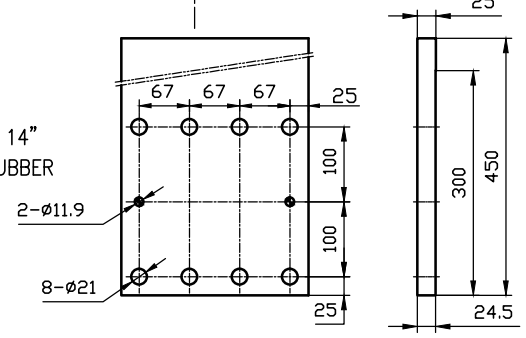


P.T.O ATTACHED

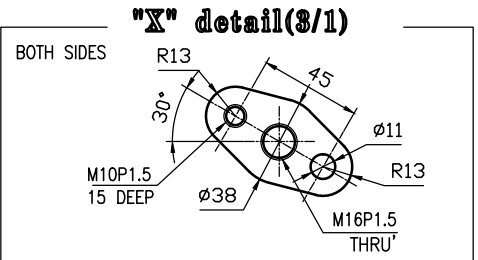
DMP 6500 MARINE TRANSMISSION SPECIFICATION	
GEAR RATIO	5.11, 5.62, 5.91, 6.57, 6.95
TOTAL WEIGHT	APPROX. 900 Kg(DRY)
OIL CAPACITY	APPROX. 40 L
OIL VISCOSITY	SAE # 30
OIL PRESSURE	1.96 ~ 2.54 MPa CLUTCH OIL
DIRECTION OF ROTATION	INPUT C.C.W VIEWED FROM THE STERN
	OUTPUT C.W VIEWED FROM THE STERN
OIL CHANGE INTERVAL	THE FIRST 100HOURS OF INITIAL OPERATION AND EVERY 1000HOURS THEREAFTER
SHIFTING LIMIT	UNDER 50% OF THE RATED ENGINE SPEED
OIL COOLER	WATER FLOW 40 ~ 60 L/m
	TEMPERATURE OF COOLING WATER MAX 32°
OPERATING TORQUE OF SHIFTING LEVER	UNDER 2.94Nm



REMARK
1.HOUSING: SAE#0
2.DRIVING RING: SAE 14"
3.COULING TYPE : RUBBER



BRACKET DIMENSION



TOLERANCE ON		PART NO.		PART NAME		QTY		MATERIAL		SIZE		REMARKS	
분수	소수	각도	분수	소수	각도	분수	소수	각도	분수	소수	각도	분수	소수
±	±	±	±	±	±	±	±	±	±	±	±	±	±
1	0.3	0.1	±	0.05									
4	0.5	0.2	±	0.07									
16	0.7	0.3	±	0.1									
63	1.2	0.5	±	0.2									
250	2.0	0.8	±	0.3									

작성 DATE	2012.05.10	척도 SCALE	N/S
APPROVED BY	JK.Kim	CHECKED BY	KS.Han
DESIGNED BY	KC.Yoon		

TYPE	DMP6500	ORIGINAL DWG. NO.	
NAME	MARINE TRANSMISSION	DWG. NO.	65000GA~E-014RC
SIZE	A3	CODE ID. NO.	000

